

| *SINGLE TUBULAR UPSWEEP ARM SPECIFICATIONS |                  |            |
|--|------------------|------------|
| CATALOG NO.                                | ARM LENGTH (FT.) | RISE (FT.) |
| HPS-1-4014                                 | 4'               | 3'         |
| HPS-1-4016                                 | 6'               | 3'         |
| HPS-1-4018                                 | 8'               | 3'         |

| POLE SPECIFICATIONS |                     |                  |                    |
|---------------------|---------------------|------------------|--------------------|
| NO.                 | COMPONENT           | ASTM DESIGNATION | MIN. YIELD (P.S.I) |
| 1.                  | POLE SHAFT          | A-595 GR. A      | 55,000             |
| 2.                  | BASE PLATE          | A36              | 36,000             |
| 3.                  | ANCHOR BOLTS        | F1554 GR. 55     | 55,000             |
| 4.                  | GALVANIZED HARDWARE | A153             | -                  |

POLES SHALL HAVE A POLYESTER POWDER COAT FINISH IN A STANDARD COLOR.

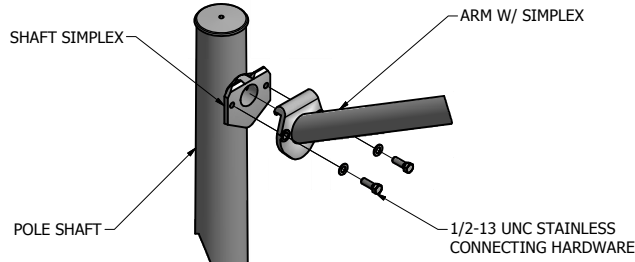
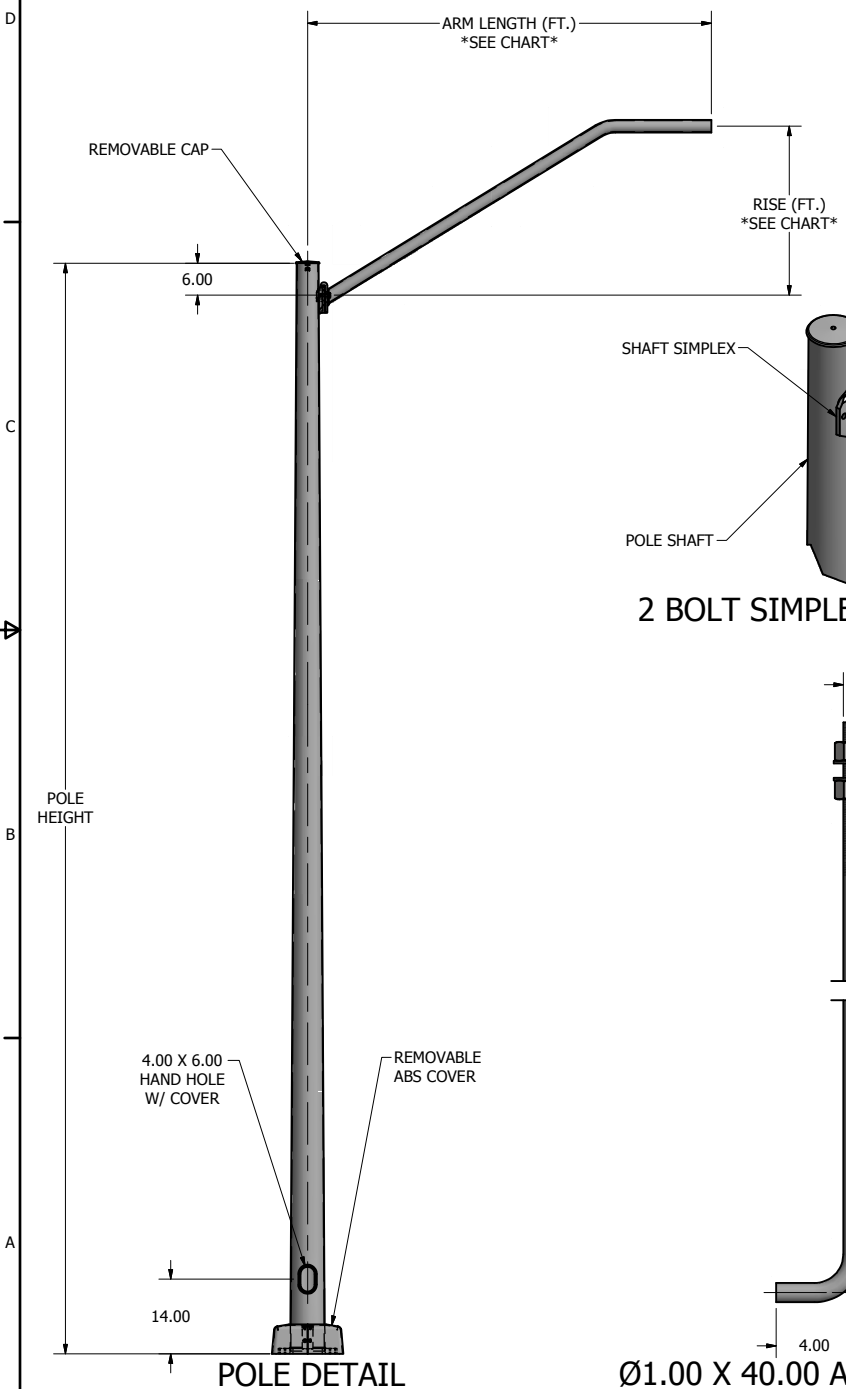
| POLE DIMENSIONS |                |                   |        |                 |
|-----------------|----------------|-------------------|--------|-----------------|
| POLE HGT. (FT.) | TOP DIA. (IN.) | BOTTOM DIA. (IN.) | GAGE   | MTG. HGT. (FT.) |
| 37'             | 3.82           | 9.00              | 11 GA. | 40'             |

| BASE PLATE DIMENSIONS |                       |                 |                  |
|-----------------------|-----------------------|-----------------|------------------|
| BOLT CIRCLE (IN.)     | BASE PLATE DIM. (IN.) | BOLT HOLE (IN.) | PLATE THK. (IN.) |
| 12.00-13.00           | 13.00 SQ              | 1.25            | 1.00             |

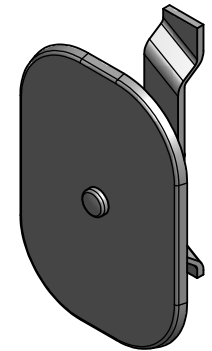
| ANCHOR BOLT DIMENSIONS |                          |
|------------------------|--------------------------|
| ANCHOR BOLT DIA. (IN.) | ANCHOR BOLT LENGTH (IN.) |
| 1.00                   | 40.00                    |

| ALLOWABLE WIND LOADING (SQ. FT.) PER ARM |     |
|--|-----|
| WIND*                                    | EPA |
| 100 MPH                                  | 2.0 |

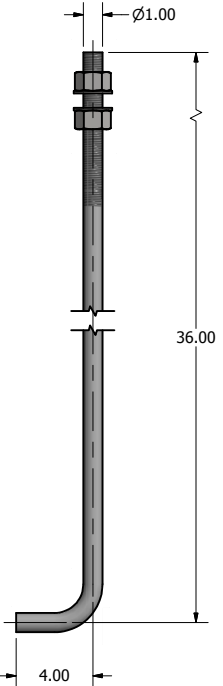
\*WITH 1.3 GUST FACTOR



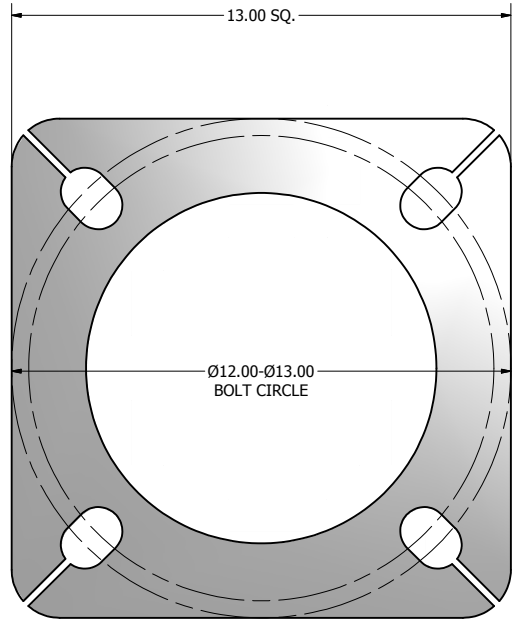
2 BOLT SIMPLEX DETAIL VIEW



4.00 X 6.00 HAND HOLE COVER



Ø1.00 X 40.00 ANCHOR BOLT



13.00 X 13.00 X 1.00 THK. BASE PLATE

SOME GEOGRAPHICAL AREAS HAVE SPECIAL WIND CONDITIONS THAT CAN CREATE WIND INDUCED VIBRATIONS CAUSING A FATIGUE PROBLEM. NO METHOD HAS YET BEEN FOUND FOR PREVENTING OR REDUCING Destructive LIGHTNING STRIKES. POLE FABRICATORS ARE REQUIRED TO PROVIDE PROTECTIVE LIGHTNING RODS AND WIRING. THESE CONDITIONS ARE REQUIRED AND CANNOT BE GUARANTEED AGAINST, AND ARE THE RESPONSIBILITY OF A LOCAL SITE ENGINEER.

TITLE:  
CATALOG:  
DWG NO: HPS-1-4014-HPS-1-4018 SIZE: C SHEET 1 OF 1

23171 Groesbeck Hwy.  
Warren, MI 48089  
P: (586) 774-6105 | F: (586) 774-5706  
www.generalstructuresinc.com



|                   |                 |
|-------------------|-----------------|
| DRAWN: M. HARVALA | DATE: 2/18/2015 |
| CHECKED:          | DATE:           |
| REVISION:         | APPROVED:       |
| QUOTE:            | S.O.#           |
| REF:              | SCALE: NONE     |

